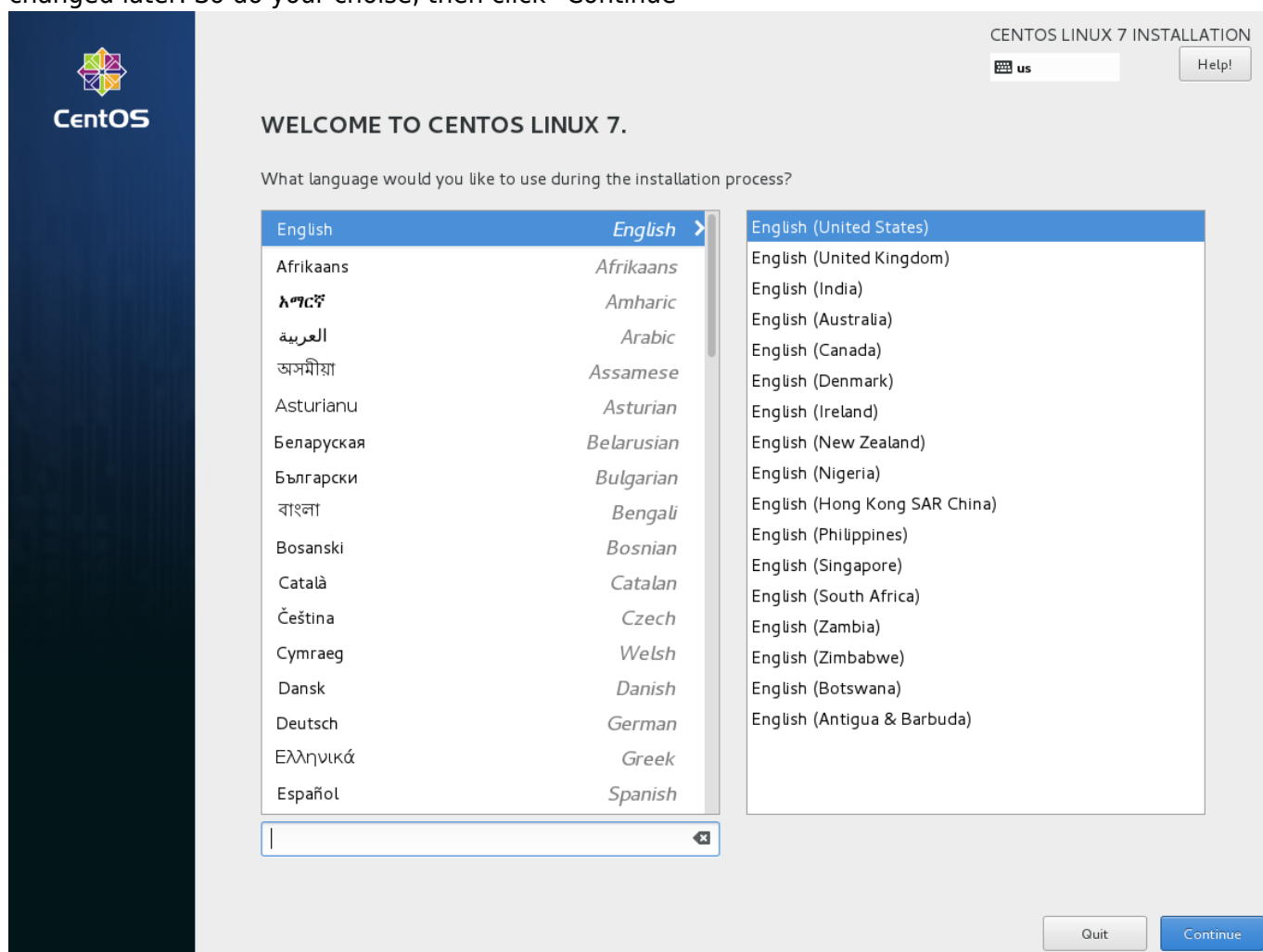


Redhat / CentOS 7 - Grapical Installation

The graphical installation interface is the preferred method of manually installing Red Hat Enterprise Linux. It allows you full control over all available settings, including custom partitioning and advanced storage configuration, and it is also localized to many languages other than English, allowing you to perform the entire installation in a different language.

So let's start!

The first screen of the installation program is the Welcome to Red Hat Enterprise Linux 7.3 screen. Here you select the language that Anaconda will use for the rest of the installation. This selection will also become the default for the installed system, unless changed later. So do your choice, then click "Continue"

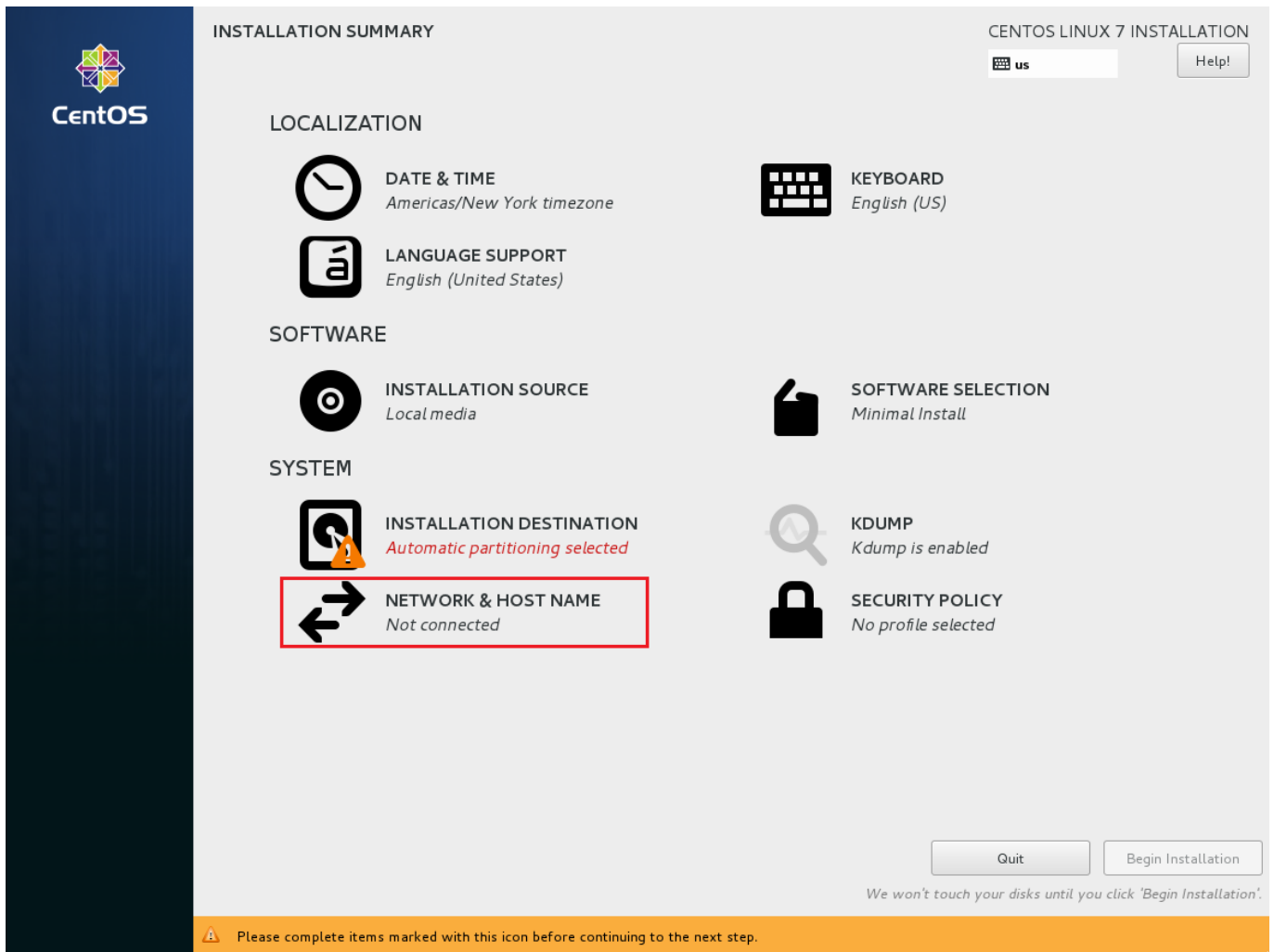


This leads us, to the Installation Summary screen, the central location for setting up an installation.

Netzwerk Konfiguration

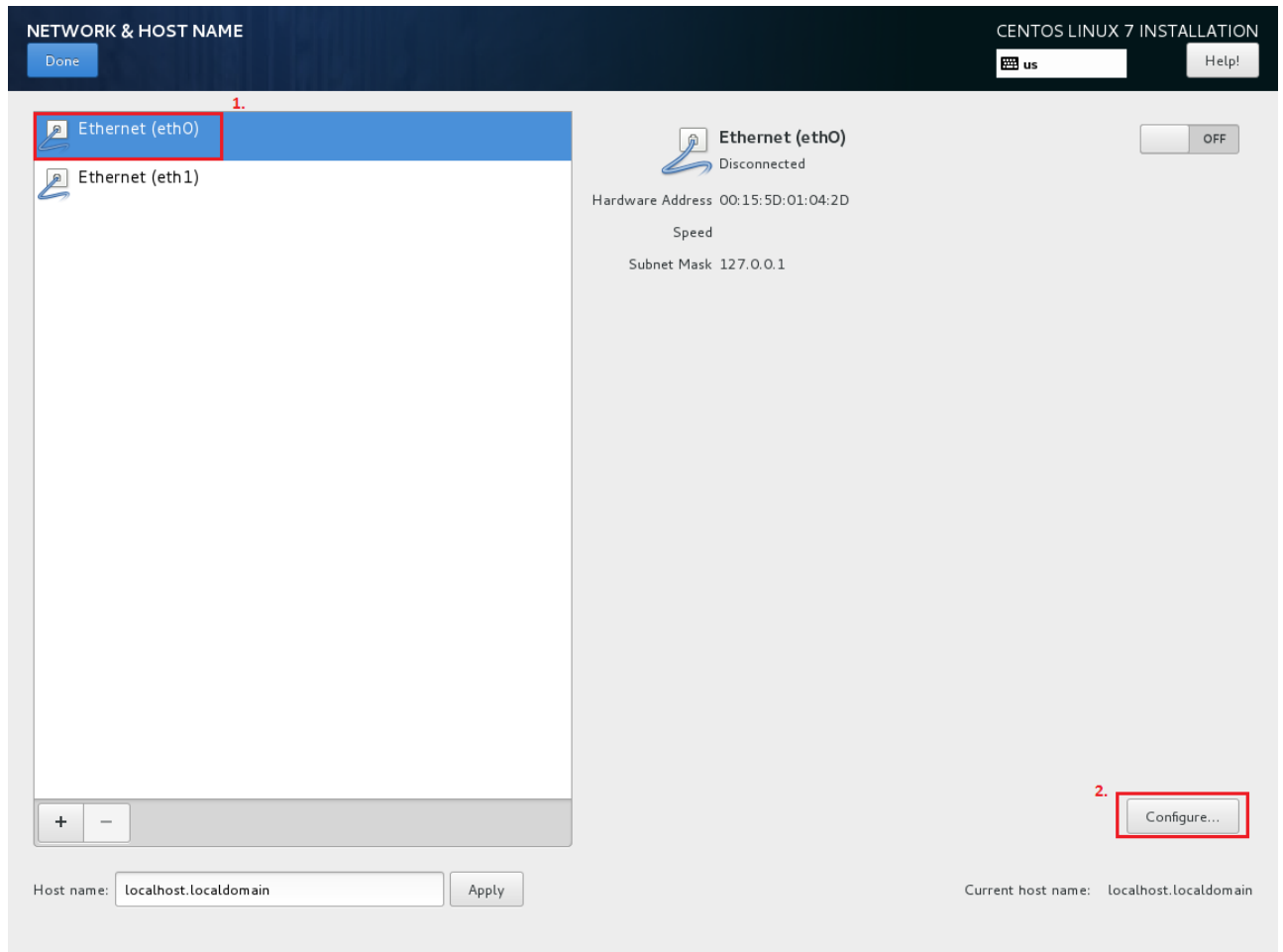
Als erster Schritt, konfiguriert man immer zuerst das Netzwerk, da gewisse andere Konfigurationen;

z.B. der NTP Zeitserver oder die individuelle Package Konfiguration, je nach Installationsmedium abhängig ist.

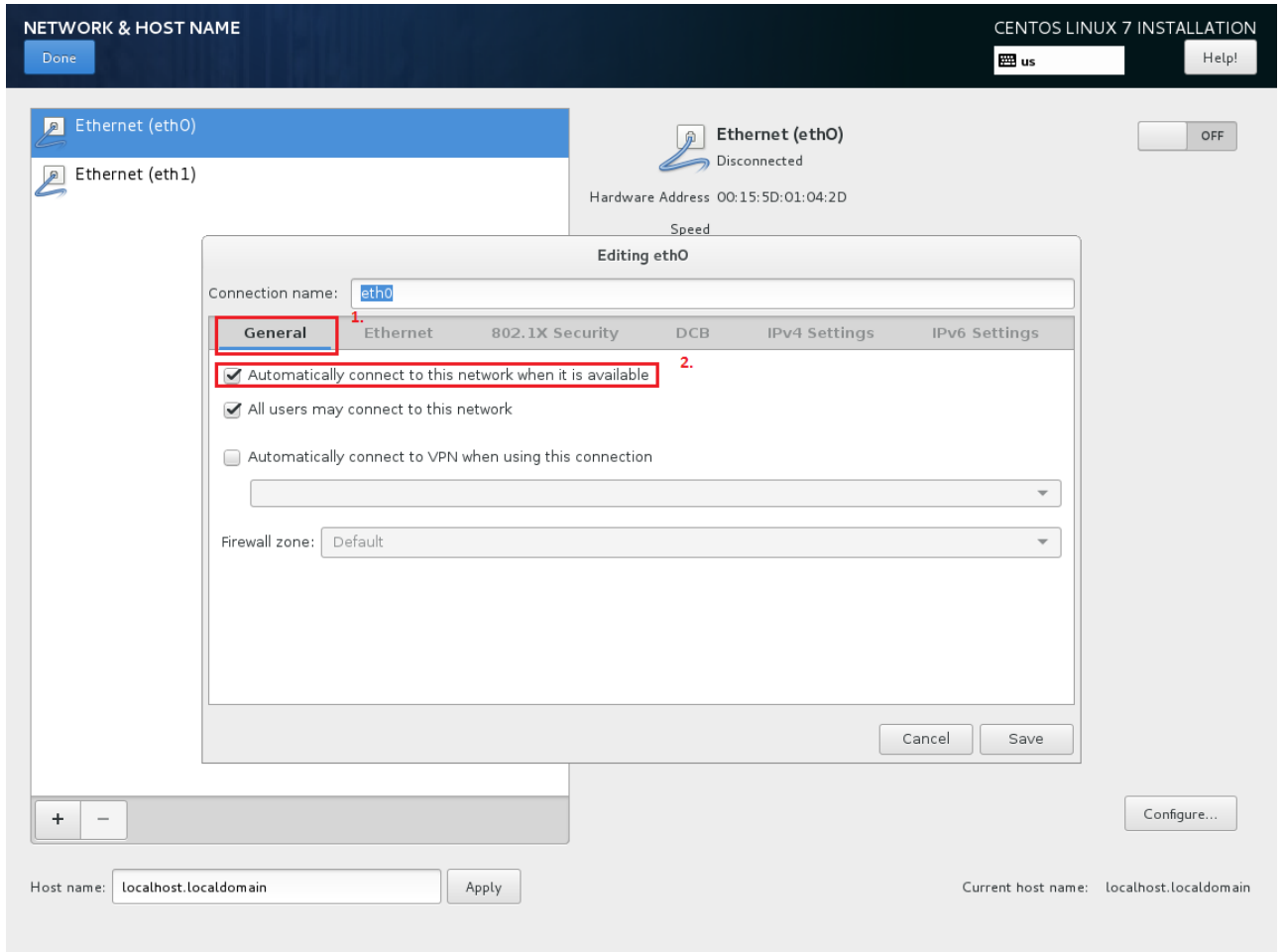


The screenshot shows the 'INSTALLATION SUMMARY' screen for CentOS Linux 7. The interface is organized into several sections: LOCALIZATION, SOFTWARE, and SYSTEM. Under LOCALIZATION, there are settings for DATE & TIME (Americas/New York timezone), LANGUAGE SUPPORT (English (United States)), and KEYBOARD (English (US)). Under SOFTWARE, there are settings for INSTALLATION SOURCE (Local media) and SOFTWARE SELECTION (Minimal Install). Under SYSTEM, there are settings for INSTALLATION DESTINATION (Automatic partitioning selected), NETWORK & HOST NAME (Not connected), KDUMP (Kdump is enabled), and SECURITY POLICY (No profile selected). The NETWORK & HOST NAME setting is highlighted with a red box. At the bottom right, there are 'Quit' and 'Begin Installation' buttons. A warning message at the bottom states: 'Please complete items marked with this icon before continuing to the next step.' Below this message, it says: 'We won't touch your disks until you click 'Begin Installation'.'

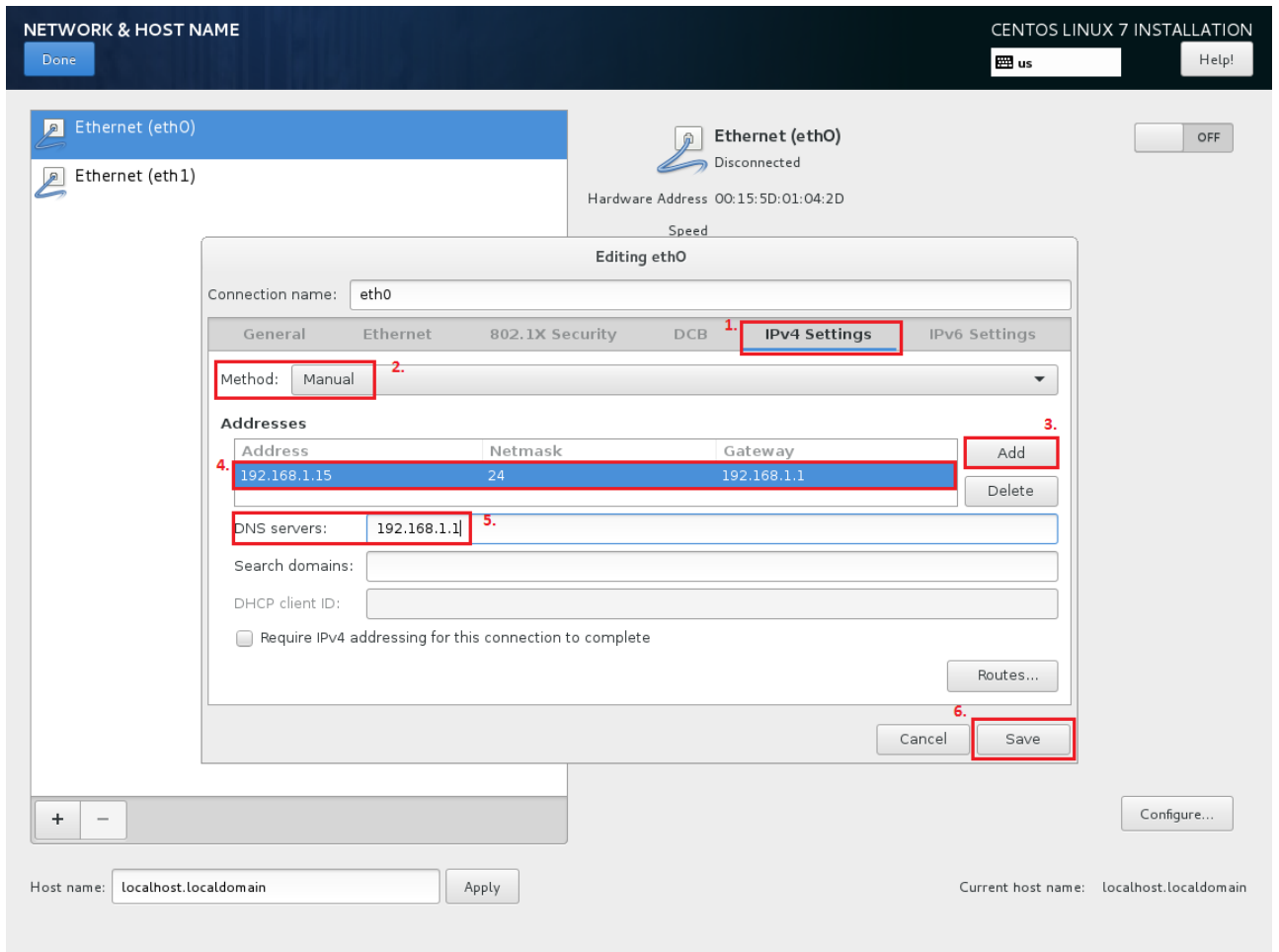
- Als erstes, wählt man sich **das zu konfigurierende Interface** aus und klickt anschliessend zum bearbeiten der Konfigurationen unten auf **Configure..**



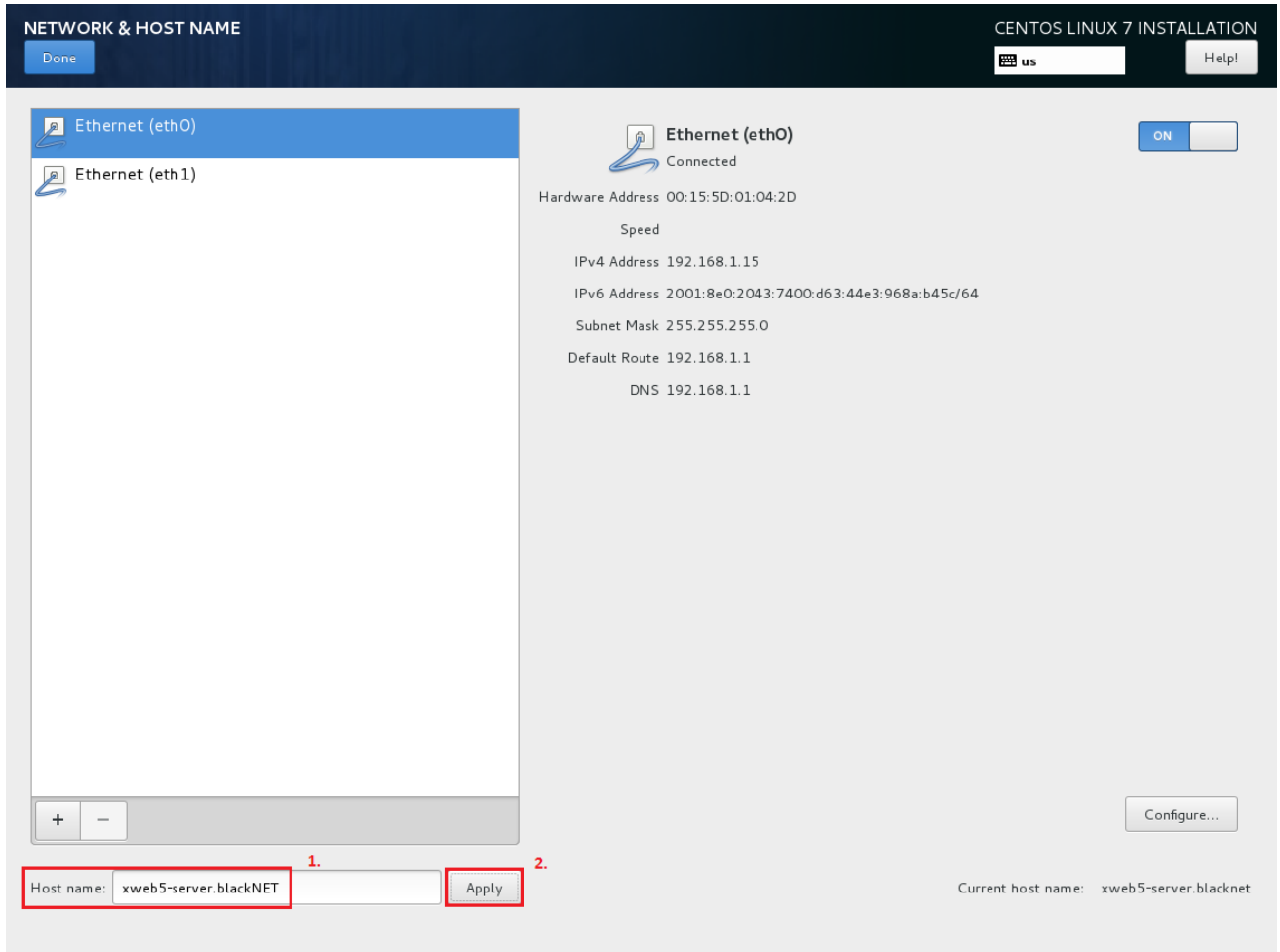
- Nun wechselt man als erstes zum Tab: **General** und setzt dort ein Hacken bei: "Automatically connetc to this network.."



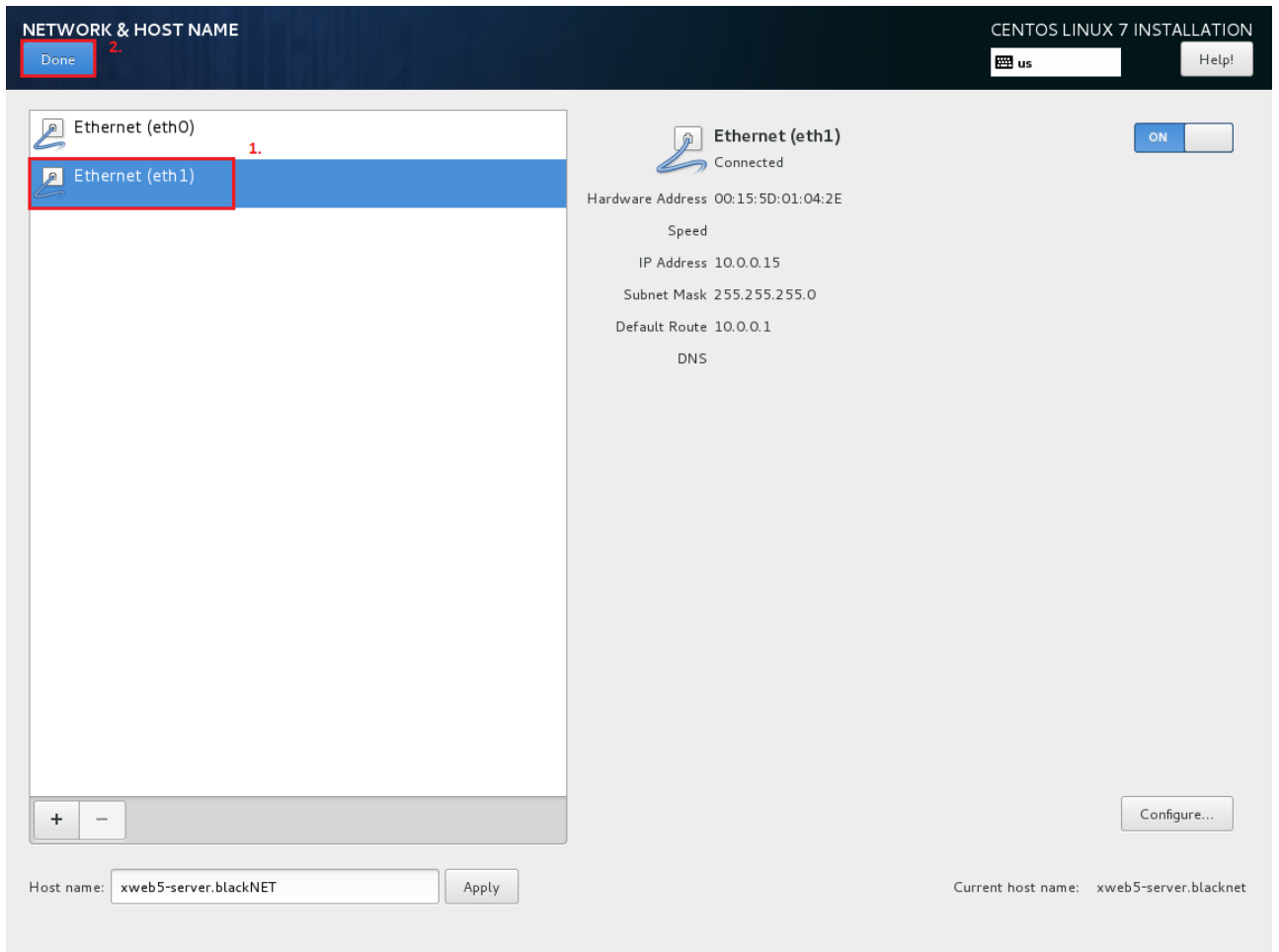
- Anschliessend, wird auf den Tab: **IPv4Settings** gewechselt, und dort das Interface, nach folgendem Beispiel für eine fixe IP-Adresse Konfiguriert:



- Ist die Konfiguration, des ersten Interfaces abgeschlossen, kann man unten wie bei **Punkt 1.** markiert einen neuen **Hostnamen für seinen neuen Server** vergeben. Nach Eingabe unbedingt auf **“Apply”** klicken!

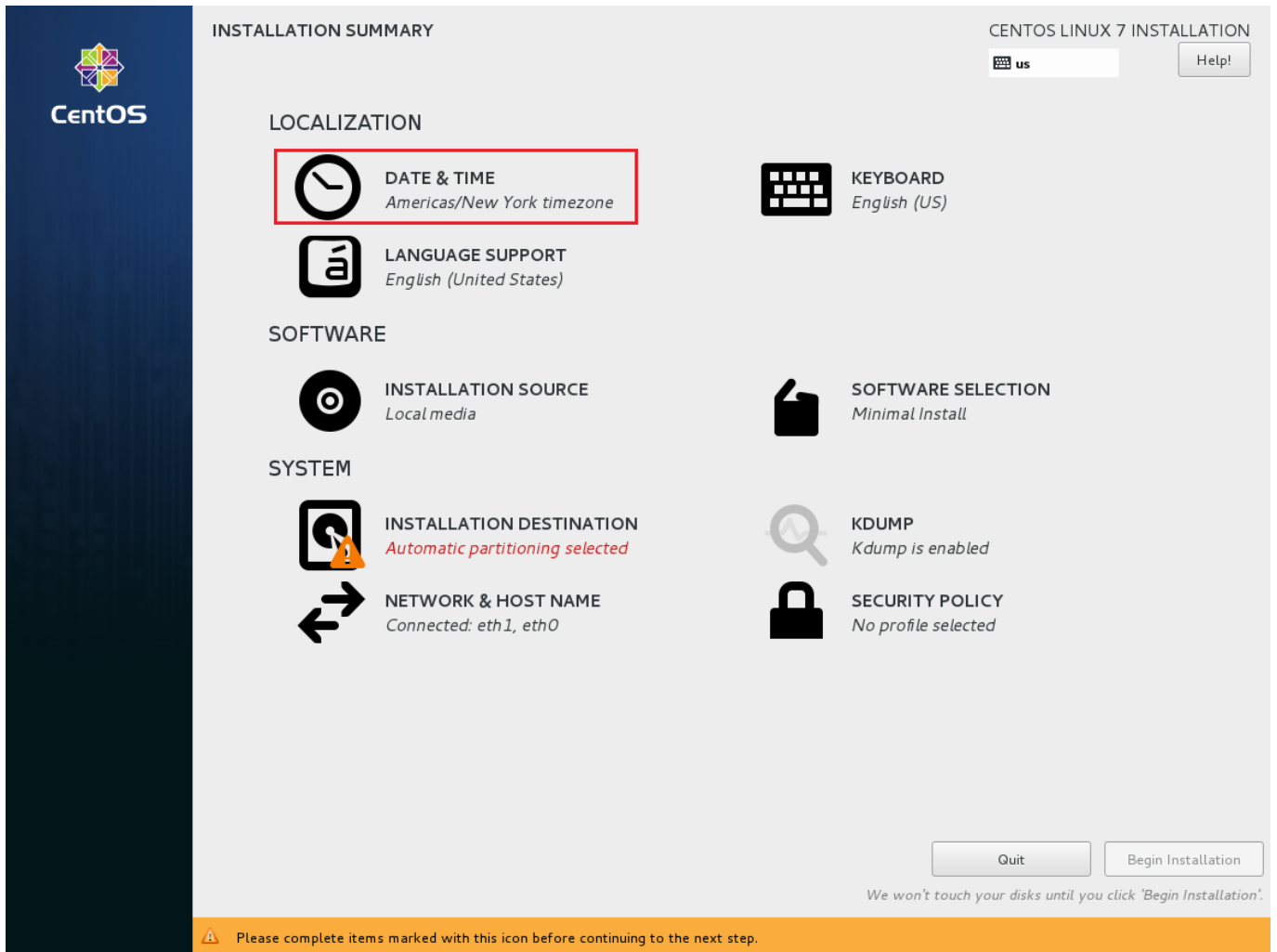


- Falls nötig, kann man auch noch sein zweites Interface konfigurieren.. (Falls vorhanden) **Zum anschliessen der Netzwerk-Konfiguration**, klickt man dann oben auf den **Butten "Done"**.



Time / Date Konfiguration:

Im nächsten Schritt, werden die Time / Date Einstellungen festgelegt.



The screenshot shows the 'INSTALLATION SUMMARY' screen for CentOS Linux 7. The interface is divided into several sections: LOCALIZATION, SOFTWARE, and SYSTEM. Under LOCALIZATION, 'DATE & TIME' is highlighted with a red box, showing 'Americas/New York timezone'. Other options include 'KEYBOARD' (English (US)), 'LANGUAGE SUPPORT' (English (United States)), 'INSTALLATION SOURCE' (Local media), and 'SOFTWARE SELECTION' (Minimal Install). Under SYSTEM, 'INSTALLATION DESTINATION' is marked with a warning icon and shows 'Automatic partitioning selected'. Other options include 'KDUMP' (Kdump is enabled) and 'SECURITY POLICY' (No profile selected). At the bottom, there are 'Quit' and 'Begin Installation' buttons, with a note: 'We won't touch your disks until you click 'Begin Installation''. A footer message states: 'Please complete items marked with this icon before continuing to the next step.'

- Unordered List Item

Last update: **2017/09/11 16:03**